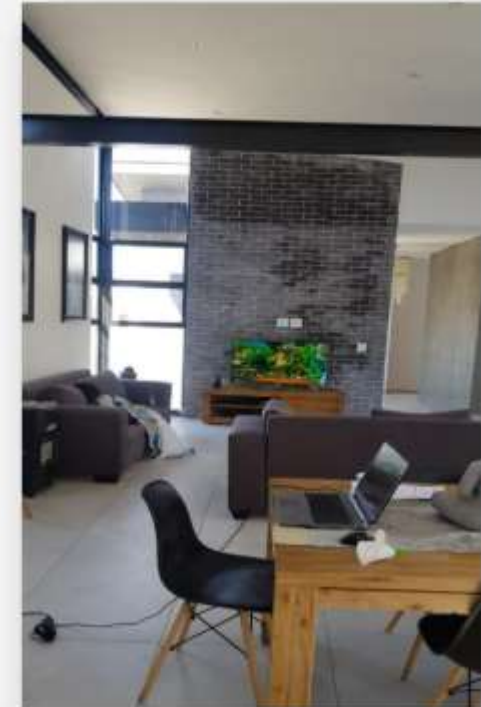




*Black Satin Clay Brick Tile exposed clay brick tile wall. This wall was not cleaned properly with clean water and sponge after application and resulted in Tile Grout marks over the face of the Clay Brick Tile.*

## BRICK TILE INSTALLATION GUIDE

1. Surface to be tiled must be free of any dust, dirt, and oil
2. Painted surfaces need to be chipped to ensure proper adhesion
3. Brush surfaces with a wire brush to remove any flaky bits
4. Using a chalk line, set out horizontal guidelines
5. Prepare tile adhesive according to instructions on packet
6. Apply Tile adhesive using a serrated applicator and press tiles firmly onto wall (10-12mm gap between tiles)
7. Grouting (optional) is done with a 3:1 mixture of fine sand and cement
8. Joints can be finished of using a square or round pointing tool
9. Finally brush entire surface with a soft brush to remove any excess dust.



**TOP ROCK BRICK & TILE**

*Contact us for technical  
advice on 011 805 7000*



**TOP ROCK BRICK & TILE**



*TFC Grout Off and Easy Clean is the only product to use on our Clay Brick Tiles to remove Grout and Tile Adhesive stains*



---

*“Make sure to remove the Tile Adhesive or Grout immediately from the face of the Clay Brick Tile with clean water”*

---

## BRICK TILE CLEANING GUIDE

**(Only use this guide if you can not remove the Tile Grout or Tile Adhesive from the Clay Brick Tiles)**

- Clean excess Tile Grout or Tile Adhesive from the face of the Clay Brick Tile with a **plastic bristle brush**
- Clean your tiles with Grout Off and Easy Clean until the “haze” is completely gone. Clay tiles tend to leave efflorescence, repeat again
- Make sure the tiles are completely dry before applying the recommended Natural Stone Sealer Matt Finish to enhance the colour.



*Exposed wall after cleaning with TFC Grout Off and Easy Clean*